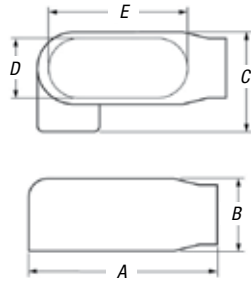
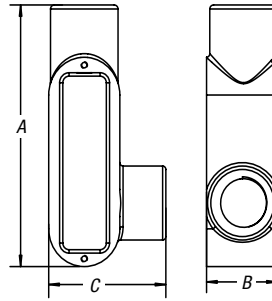


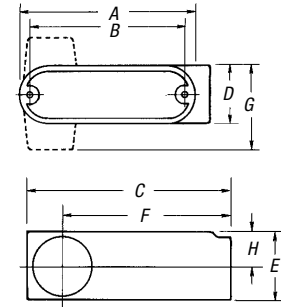
Conduit Bodies and Covers



LR Form 7 and Form 8



LR Series 35



LR Threaded Aluminum and EMT Aluminum

LR Form 7 BlueKote® Conduit Bodies



CAT. NO.	HUB SIZE	DIMENSIONS (IN.)					CU. IN.
		A	B	C	D	E	
LR17	½"	4.60	1.40	1.45	.95	3.20	4.0
LR27	¾"	5.25	1.60	1.65	1.15	3.80	6.6
LR37	1"	6.00	1.90	2.60	1.35	4.55	10.6
LR47	1¼"	6.45	2.30	3.05	1.80	5.00	18.8
LR57	1½"	7.90	2.60	3.80	2.05	5.45	26.4
LR67	2"	8.30	3.20	4.25	2.45	6.40	51.0
LR77	2½"	10.55	3.65	5.80	3.60	8.40	102.0
LR87	3"	10.55	4.40	5.80	3.60	8.40	132.0
LR97	3½"	12.85	4.90	7.03	4.55	10.25	210.0
LR107	4"	12.85	5.40	7.03	4.55	10.25	243.0

LR Form 8 BlueKote® Conduit Bodies



CAT. NO.	HUB SIZE	DIMENSIONS (IN.)					CU. IN.
		A	B	C	D	E	
LR18	½"	4.94	1.44	2.16	1.00	3.31	4.4
LR28	¾"	5.56	1.69	2.31	1.19	3.94	8.0
LR38	1"	6.47	1.94	2.63	1.38	4.56	13.0
LR448	1¼"	7.53	2.38	3.16	1.75	5.31	23.6
LR58	1½"	9.13	2.78	4.00	2.13	6.50	45.0
LR68	2"	11.00	3.56	5.00	3.00	8.56	88.0
LR78	2½"	13.94	4.44	6.69	4.25	10.88	110.0
LR888	3"	13.94	4.81	6.69	4.25	10.88	110.0

LR Series 35 Conduit Bodies



CAT. NO.	HUB SIZE	DIMENSIONS (IN.)			CU. IN.
		A	B	C	
LR50M	½"	4.68	2.05	1.37	4.5
LR75M	¾"	5.37	2.25	1.70	7.5
LR100M	1"	6.20	2.65	1.90	12.5
LR125M	1¼"	8.12	2.75	2.75	32
LR150M	1½"	8.12	3.50	2.83	35.3
LR200M	2"	10.50	4.12	3.31	68
LR250M	2½"	13.60	5.71	3.90	142
LR300M	3"	13.87	5.87	4.75	173
LR350M-TB	3½"	16.25	6.10	5.62	292
LR400M	4"	16.25	6.95	5.62	324

LR Threaded Aluminum Conduit Bodies



CAT. NO.	HUB SIZE	DIMENSIONS (IN.)								CU. IN.	CU. IN.*
		A	B	C	D	E	F	G	H		
ALR1	½"	3.88	3.50	4.31	1.31	1.38	3.56	2.00	.78	4.3	4.8
ALR2	¾"	4.63	4.13	5.13	1.53	1.63	4.13	2.31	.88	7.3	7.5
ALR3	1"	5.38	4.88	5.31	1.75	1.88	4.88	2.50	1.00	11.8	12.5
ALR4	1¼"	7.25	6.50	7.88	2.50	2.75	6.31	3.38	1.50	32.0	36.5
ALR5	1½"	7.25	6.50	7.88	2.50	2.75	6.31	3.38	1.50	32.0	36.5
ALR6	2"	9.50	8.56	10.19	3.13	3.44	8.19	3.94	1.94	69.5	73.8
ALR7	2½"	12.25	11.25	13.00	4.50	4.50	10.25	5.50	2.88	190.0	—
ALR8	3"	12.25	11.25	13.00	4.50	4.50	10.25	5.50	2.88	190.0	—
ALR9	3½"	15.00	14.44	16.25	5.50	5.50	12.75	6.50	3.00	366.0	—
ALR10	4"	15.00	14.44	16.25	5.50	5.50	12.75	6.50	3.00	366.0	—

*LRL Style Only

LR EMT Aluminum Conduit Bodies



CAT. NO.	HUB SIZE	DIMENSIONS (IN.)								CU. IN.	CU. IN.*
		A	B	C	D	E	F	G	H		
BLR1	½"	3.88	3.50	4.31	1.31	1.38	3.56	2.00	.78	4.3	4.8
BLR2	¾"	4.63	4.13	5.13	1.53	1.63	4.13	2.31	.88	7.3	7.5
BLR3	1"	5.38	4.88	5.31	1.75	1.88	4.88	2.50	1.00	11.8	12.5
BLR4	1¼"	7.25	6.50	7.88	2.50	2.75	6.31	3.38	1.50	32.0	36.5

*LRL Style Only